



Diocesan Synod

Saturday 25 June 2022





Welcome





Worship



Here I Am, Lord (I, The Lord of Sea and Sky)

I, the Lord of sea and sky,
I have heard my people cry.
All who dwell in deepest sin,
My hand will save.
I who made the stars of night,
I will make their darkness bright.
Who will bear my light to them?
Whom shall I send?

Chorus:

Here I am Lord. Is it I Lord?
I have heard you calling in the night.
I will go Lord, if you lead me.
I will hold your people in my heart.

I, the Lord of snow and rain,
I have borne my people's pain.
I have wept for love of them,
They turn away.
I will break their hearts of stone,
Give them hearts for love alone.
I will speak my word to them,
Whom shall I send?

Chorus:

Here I am Lord. Is it I Lord?
I have heard you calling in the night.
I will go Lord, if you lead me.
I will hold your people in my heart.

I, the Lord of wind and flame,
I will tend the poor and lame.
I will set a feast for them,
My hand will save.
Finest bread I will provide,
Till their hearts be satisfied.
I will give my life to them.
Whom shall I send?

Chorus:

Here I am Lord. Is it I Lord?
I have heard you calling in the night.
I will go Lord, if you lead me.
I will hold your people in my heart.

Repeat Chorus



Worship Dwelling in the Word



Romans 12

1 I appeal to you therefore, brothers and sisters, by the mercies of God, to present your bodies as a living sacrifice, holy and acceptable to God, which is your spiritual worship. **2** Do not be conformed to this world, but be transformed by the renewing of your minds, so that you may discern what is the will of God—what is good and acceptable and perfect.

3 For by the grace given to me I say to everyone among you not to think of yourself more highly than you ought to think, but to think with sober judgement, each according to the measure of faith that God has assigned. **4** For as in one body we have many members, and not all the members have the same function, **5** so we, who are many, are one body in Christ, and individually we are members one of another. **6** We have gifts that differ according to the grace given to us: prophecy, in proportion to faith; **7** ministry, in ministering; the teacher, in teaching; **8** the exhorter, in exhortation; the giver, in generosity; the leader, in diligence; the compassionate, in cheerfulness.

9 Let love be genuine; hate what is evil, hold fast to what is good; **10** love one another with mutual affection; outdo one another in showing honour. **11** Do not lag in zeal, be ardent in spirit, serve the Lord. **12** Rejoice in hope, be patient in suffering, persevere in prayer. **13** Contribute to the needs of the saints; extend hospitality to strangers. **14** Bless those who persecute you; bless and do not curse them. **15** Rejoice with those who rejoice, weep with those who weep. **16** Live in harmony with one another; do not be haughty, but associate with the lowly; do not claim to be wiser than you are. **17** Do not repay anyone evil for evil, but take thought for what is noble in the sight of all. **18** If it is possible, so far as it depends on you, live peaceably with all. **19** Beloved, never avenge yourselves, but leave room for the wrath of God; for it is written, 'Vengeance is mine, I will repay, says the Lord.' **20** No, 'if your enemies are hungry, feed them; if they are thirsty, give them something to drink; for by doing this you will heap burning coals on their heads.' **21** Do not be overcome by evil, but overcome evil with good.

**Loving God,
Though our destination is not yet clear,
May we trust in Your graceful promises;
Though we are uncertain of ourselves,
May we be rooted in Your loving regard;
Though our attention is inclined to wander,
May we hear the things You are saying;
Though we often neglect Your influence,
May we be convicted of Your power to change,
In Jesus Christ our Lord.**



22.15

Alan Smith

First Church Estates Commissioner

Growing in God



THE CHURCH
OF ENGLAND
**Diocese of St Edmundsbury
and Ipswich**

The Church Commissioners, The 2023-25 Triennium, and the decade ahead

**Presentation to St Edmundsbury and Ipswich Diocesan Synod
25th June 2022**

The Church Commissioners - Our history

- **Roots in Queen Anne's Bounty established in 1704** - Created by merging the Queen Anne's Bounty and the Ecclesiastical Commissioners in 1947:
 - Queen Anne's Bounty supplemented poor clergy's income and provided and repaired parsonages
 - The Ecclesiastical Commissioners reorganised dioceses, abolished surplus posts in cathedrals and took over responsibility for funding bishops and some cathedral costs
 - **A statutory body** corporate; and a registered **charity**
 - A globally significant **"in-perpetuity" endowment fund**
 - **One of the seven National Church Institutions** – (1) Archbishops' Council; (2) Bishopthorpe Palace; (3) Church Commissioners for England; (4) Church of England Central Services; (5) Church of England Pensions Board; (6) Lambeth Palace; (7) The National Society for the Promotion of Education
-

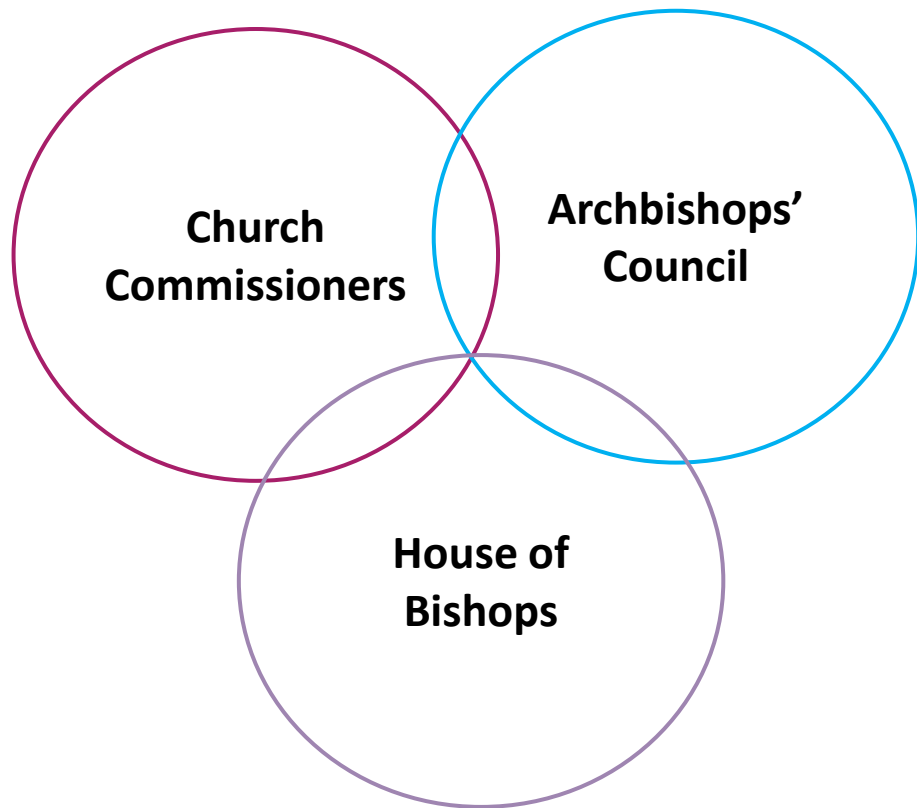
The Church Commissioners – Our role

- The Commissioners has **three primary responsibilities**
 - Own and manage the endowment fund (£10.1bn at 31 December 2021) responsibly and ethically
 - Meet pre-1998 pension obligations to Church of England clergy
 - Subject to affordability, make charitable distributions to support the Church of England’s mission and ministry in perpetuity
 - Charitable expenditure relates primarily to financial support for dioceses and the local church, and for archbishops’, bishops’ and cathedrals’ ministry
 - Other functions
 - Operational management of payroll for all Church of England clergy
 - Manage the Commissioners’ establishment costs effectively and efficiently
 - Provision of other administrative and regulatory functions to the wider Church of England – including overseeing C of E benefice and parish reorganisation and building closures
-

Sustainable Distributions - Triennium Funding 2023-25

Vision: A Church for the whole nation which is Jesus Christ centred and shaped by the five marks of mission

**The Decade Ahead – One of the most significant in our lifetimes:
Opportunity and Risk - Church; Country; Community; Climate;
Coming out of Covid; Conflict**



**Key funding
priorities**

Looking over an extended
time horizon of **three
triennia 2023 - 31**

- Supporting the Church to deliver the **bold outcomes and strategic priorities of the Vision & Strategy**, including reaching the **young and the poor**, and **better representing** the communities we serve
- Helping the Church to transition to a **lower carbon approach** in line with Net Zero 2030 goal
- Making a step change in the area of **Justice**, in particular **racial and social justice** and other areas of **diversity and inclusion**
- Ensuring the Church is a **safe place for all**

The Principles for the Distribution Framework – Intergenerational Equity

The Church Commissioners seek to **maximise sustainable distributions** whilst maintaining **intergenerational equity**, assessed **qualitatively** as well as **quantitatively**

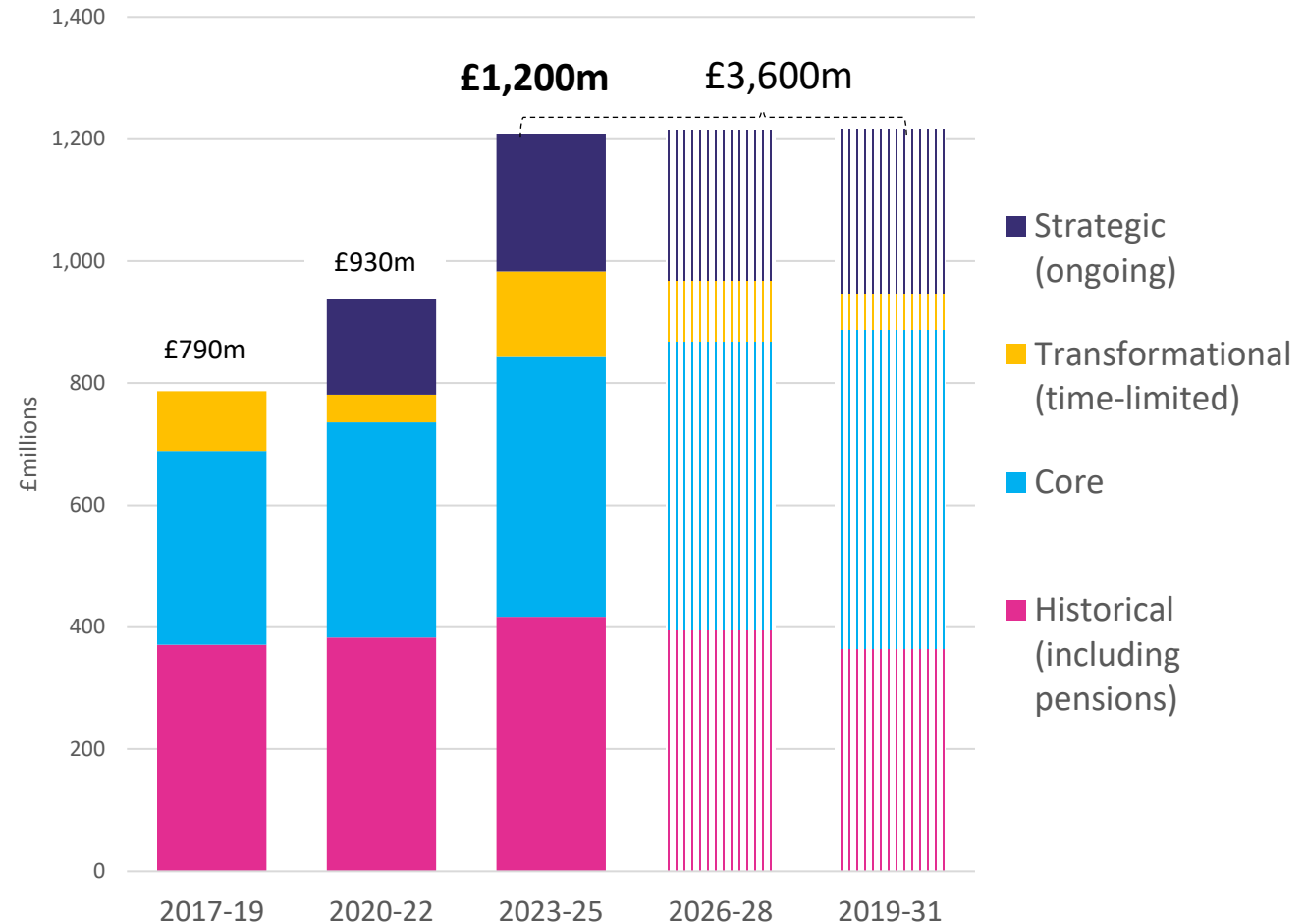
Strategic: ongoing expenditure on targeted programmes e.g. Diocesan Investment to enable the delivery of the Vision & Strategy outcomes

Transformational: time-limited expenditure (ends by 2031) on short-medium term activity e.g. Net Zero

Core: ongoing expenditure fundamental to support the mission and ministry of the Church e.g. Lowest Income Communities Funding, statutory funding for bishops and cathedrals, Safeguarding etc.

Historical: including pre-1998 clergy pension costs and allowance for past failures to be addressed e.g. redress

Funding Available



2023-25 Triennium – The Priorities

- The Church Commissioners intend to distribute **£1.2 billion over 2023-25** (up from £930 million in 2020-22)
- They hope to be able to maintain funding over the following two triennia, enabling a **bold long-term investment in the ministry and mission** of the Church of England of **£3.6 billion over 9 years**

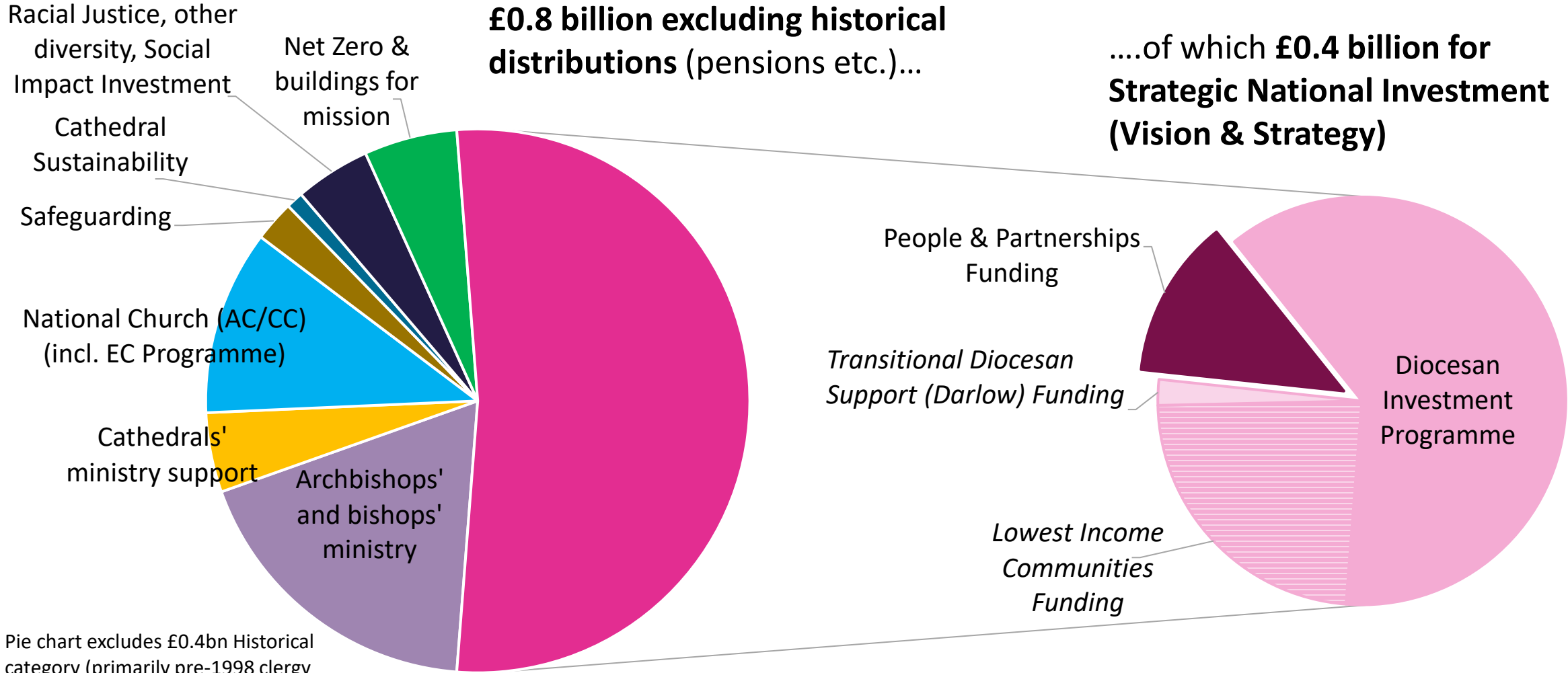


Spending Plans 2023-31:

- ✓ **£1.3 billion Strategic National Investment (£388 million in 2023-25)** to enable the **Vision & Strategy** bold outcomes and strategic priorities to be realised in **local parishes and communities**
- ✓ **£190 million Carbon Net Zero** time limited investment to support the transition to a lower carbon approach over the period to 2030
- ✓ Significant capacity to support **focussed interventions** in the area of **Racial Justice**, plus capacity for investment in **other issues of diversity and social justice**, and expansion of the **Social Impact Investment** programme
- ✓ Provision for other core funding priorities and statutory responsibilities including **Safeguarding, Bishops, Cathedrals, and National Church** activities

Planned Expenditure Allocation 2023-25

Total £1.2 billion distributions represent around 20% of Church of England expenditure



Pie chart excludes £0.4bn Historical category (primarily pre-1998 clergy pensions) and contingency

Strategic Mission and Ministry (enabling the Vision & Strategy)

Strategic National Investment will:

- Enable the **bold outcomes and strategic priorities** of the Vision & Strategy to be **realised in local parishes and communities**: investment in **local ministry** as part of holistic diocesan strategies
- Prioritise the **most deprived and resource poor** contexts
- Fuel (discern, train and deploy) a pipeline of **leaders in front-line ministry** (ordained and lay)
- Address key gaps – such as volunteer and paid leaders for **ministry with children and young people**; becoming a church which **better represents the communities we serve**
- Encourage **creative innovation** and **share learning**



- ✓ Intentionality and accountability
- ✓ Simplified funding streams
- ✓ Learning from the SDF / LInC review
- ✓ Leadership pipelines
- ✓ Cross-diocesan partnerships
- ✓ Working with partners and networks
- ✓ Innovation and learning

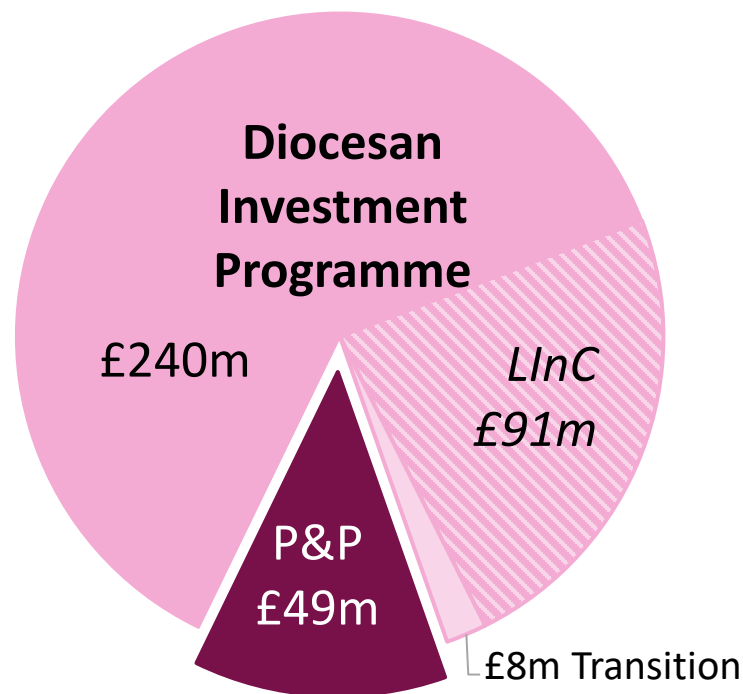
Strategic Mission and Ministry (enabling the Vision & Strategy)

£388 million in 2023-25

Potentially £1.3 billion over the next 9 years

In line with V&S Bold outcomes:

1. Doubling the number of children and young people
2. A Church which fully represents the communities we serve
3. A parish system revitalised for mission
4. 10,000 new worshipping communities
5. Every Christian empowered to live out discipleship
6. Every church a hub for formation



People & Partnerships Funding

- Funding for ministry pipelines (e.g. additional ordinands, ministry experience)
- Focussed engagement with under represented groups
- Work with partners and networks to innovate around particular challenges

£339m Diocesan Investment Programme

- Building a Jesus Christ Centred Church
- Funding diocesan-developed, locally contextualised plans to revitalise parish and local ministry
- Funding which is adaptive and responsive to local needs
- Backstop ensures all additional clergy are funded

including....

Lowest Income Communities

Funding (ongoing) as a guaranteed baseline of funding for ministry and mission in deprived areas, though the other Diocesan Investment funding will also prioritise the most deprived and resource poor contexts

and...

Transition Funding (Darlow)

remains available until 2025

What does this mean for St Eds and Ips

- **Bold long-term investment in the ministry and mission for the Church of England**
 - **We are an episcopal church that does not believe in centralisation** - Dioceses will have a much better feel for the local than the CCs, or anyone else in London – **St Eds and Ips is a key partner**
 - St Eds and Ips must **play a leading role to help shape** the design and development of funding processes and priorities – these must be developed from the bottom up; especially to:
 - **help discern how this funding can best help achieve the bold outcomes** of the Church's Vision and Strategy across St Eds and Ips in parishes and communities over the next nine years – in particular how to best focus on churches in deprived areas; resources to grow mission where it is most needed across the diocese; how to best empower churches in rural areas.
 - model in areas **where St Eds and Ips is already leading in action and thought** – (1) rural churches; (2) Balancing large towns, market towns and rural parishes in a complementary way; (3) Being missional; (4) Growing younger; (5) Mixed ecology.
-

Summary and next steps

- The Church Commissioners intend to distribute **£1.2 billion in 23-25** (30% up from £930 million in 20-22)
 - They hope to be able to maintain funding over the following two triennia, enabling a **bold long-term investment in the ministry and mission** of the Church of England of **£3.6 billion over 9 years**
 - **Key Funding Priorities** as recommended by Triennium Funding Working Group
 - Supporting the Church to deliver the **bold outcomes and strategic priorities of the Vision & Strategy**, including reaching the **young and the poor**, and **better representing** the communities we serve
 - Helping the Church to transition to a **lower carbon approach** in line with Net Zero 2030 goal
 - Making a step change in the area of **Racial Justice**, and other areas of **diversity and social justice**
 - Ensuring the Church is a **safe place for all**
 - With some significant new and re-imagined categories of expenditure, there will be **opportunity to input** into the design and development of downstream funding processes and priorities
 - Funding plan will support increase in mission & ministry of the Church of England to share the Good News of Jesus Christ in parishes and communities across England
 - **A sign of confidence and hope. An opportunity to work in partnership across the Church to serve God**
-

Refreshments



22.16

Growing in God

The Revd Canon Dave Gardner

Growing in God



THE CHURCH
OF ENGLAND
**Diocese of St Edmundsbury
and Ipswich**



**Growing in God**

**Launched in 2015, Growing in God is our strategy
for realising the diocesan vision of**

**"Flourishing congregations
making a difference".**

**It is underpinned by the Gospel that invites us to
celebrate the good news of God's saving love.**

We have learned through the challenges of the pandemic that the church's vocation is to worship and to serve and our priorities remain the same as before:

**to grow in depth, influence,
number and younger.**

Growing in God

Growing in

depth

to deepen our awareness of God with us through prayer and vibrant worship, centring our lives on Jesus Christ through the proclamation of the Word and the celebration of the Eucharist.

Growing in

influence

to participate in God's loving movement towards the world in partnership with other congregations, denominations and people of good will.

Growing in

number

to witness to the person and way of Jesus Christ, in word and worship, in service and daily life, inviting others into the fullness of life found in him.

Growing

younger

to engage all generations, allowing them to shape how we do church and investing in them as present and future ministers of the gospel; to develop our congregations to reflect the age profile of the context in which they are set.

Growing in influence

Reaching beyond ourselves in our impact on the wider world, we aim to increase our engagement and service with the wider community. In 2022 we will have...

- developed 20 new local community projects focussed on those in greatest need
- increased support for the work of our existing church schools in enabling all pupils to achieve their full potential
- a more prominent voice in challenging injustice in our county
- developed new partnerships with chaplains serving in our county

Growing younger

Building churches whose age ranges reflect our communities; lower the average age of our congregations to match the average age of the population. In 2022 we will have...

- a significant decrease in the average age of our congregations
- a significant growth in the number of under 18s engaged in worship on Sundays, mid week and fresh expressions of church
- five pilot projects that develop effective partnerships between churches and local schools including church schools
- to offer each child and their family the opportunity of a life enhancing encounter with the Christian faith and the person of Jesus Christ
- developed children's and youth workers commissioning - at least 10 of each



How we will look in 2022

Growing in depth

Responding to the call of Christ we continue to deepen our desire to respond to the call of Christ in every part of our lives. In 2022 we will have...

- significant sustained increases in the number of infants, children and adults coming to baptism and candidates for confirmation
- a greater confidence of existing and new congregation members in daily prayer, Bible study, undertaking a role in the church, serving in the community and being aware of God's presence in every aspect of life
- increased the level of average giving per electoral roll member and increased the number of those who engage in planned giving by 5%
- increased the number of candidates for ordination by at least 50% (in line with the national target)

Growing in number

Drawing the contacts we have into the life of God's kingdom, we will plant and water for God's growth of the numbers of those attending worship and fresh expressions and belonging to our electoral roll by 2022. In 2022 we will have...

- seen the reversal of the fall into growth in our average weekly attendances
- seen the reversal of the fall in our electoral rolls
- seen the creation of at least 20 'fresh expressions of church'
- created appropriate Christian communities with ecumenical partners in areas of new housing
- developed and commissioned at least 20 pioneers and 20 evangelists

2022 Outcomes

- Increased the number of ordinands.
- Provided a wider range of licensed lay ministries and developed a new pathway to ordination.
- Engaged in many areas of service in our communities.
- Increased our level of financial giving per electoral roll member.

2022 Outcomes

Began the journey of:

- Encouraging the confidence of church members to live and share their faith in Jesus Christ.
- Developing experimental small groups focussed on reaching people beyond the life of the church.
- Re-engaging in church planting.
- Broadening our reach of Church Schools and sharing examples of good practice with the local church.
- Re-gaining confidence to address issues of social injustice.

2022 Outcomes

We need to continue to address longer term trends of decline in:

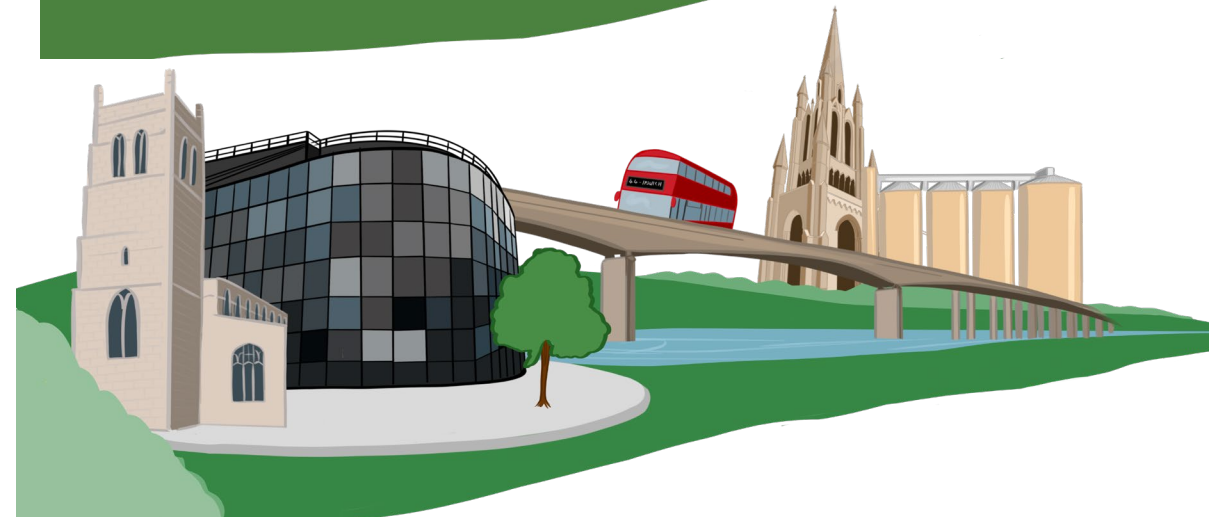
- attendance at our worship services.
- children and young people attracted to worship services.
- those seeking baptism and confirmation.

How can we be simpler, bolder and humbler?

Listen and understand our context:

- Rural
- Market town
- Larger town

Aim for sustainable growth
Develop local leadership.
Be willing to experiment!



Resources for 2022 - 2026

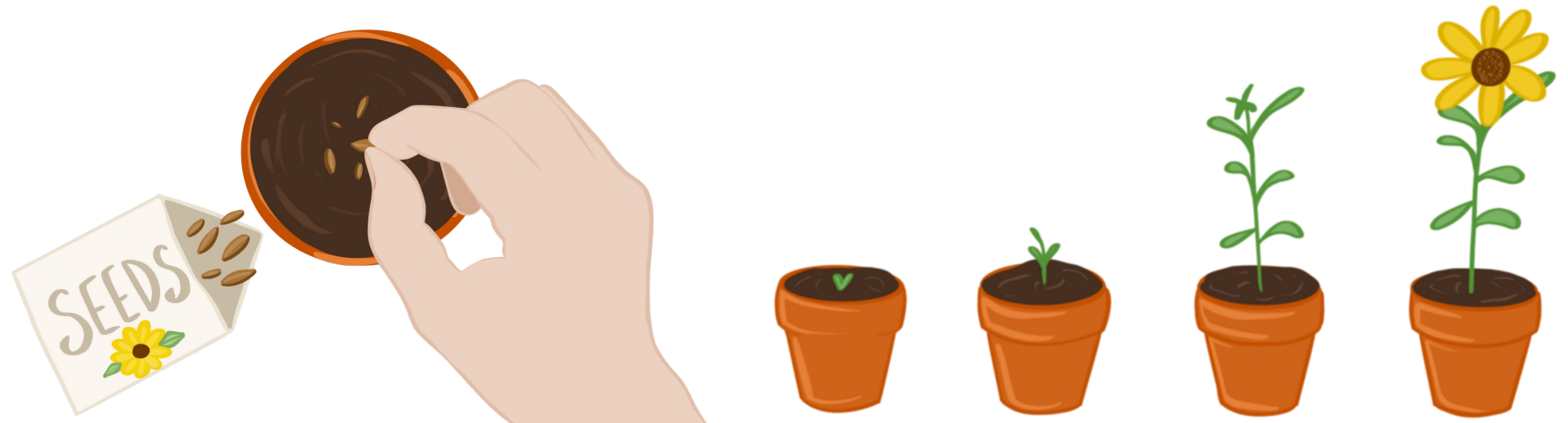
- Long term investment in leadership through a Suffolk Leadership Programme.
- Supporting you in continuing to discern your Plans for Growth using simpler materials.
- Two different in-depth training programmes for benefices.
- Promoting and supporting all vocations and training those discerning a call to ministry.

Resources for 2022 - 2026

- Developing an online learning hub to provide easily accessible discipleship, ministry and PCC training and resources.
- Re-focus and provide funding for innovative and inspirational work with children, young people and their families especially in areas of existing opportunity.
- Increase our Growing in God Growth Fund to £35,000 per year for the next five years.

How?

The plan will be delivered through our Mission and Ministry team using existing revenue expenditure, in addition, the trustees of the Diocesan Board of Finance have approved investment of funds over the next five years and finally, we are applying for c£1.3m over five years funding from the Church Commissioners.



*I planted, Apollos watered,
but God gave the growth.
(1 Corinthians 3:6)*

Questions

*I planted, Apollos watered,
but God gave the growth.
(1 Corinthians 3:6)*



 **Growing in God**



**THE CHURCH
OF ENGLAND**
SUFFOLK

22.17



LIVING
IN LOVE
& FAITH

Living in Love and Faith

Bishop Martin

Growing in God



THE CHURCH
OF ENGLAND
Diocese of St Edmundsbury
and Ipswich

22.18

Annual report on Rural

Mission

Archdeacon Sally Gaze

Growing in God



THE CHURCH
OF ENGLAND
**Diocese of St Edmundsbury
and Ipswich**

Growing in God in the Countryside Project
Report on Progress and
Discernment for
Development of the
Lightwave Community



lightwave



Growing in God in the Countryside Project Design

WORKSTREAM 1

Establish the Lightwave Community – as a movement of small mission-focussed groups, working with rural benefices, across the county.

WORKSTREAM 2

Helping diocesan and other county-wide culture and structures to make a more supportive climate for rural mission.





What is happening ? Some headline figures

- 31 Lightwave Groups
- 12 Fresh Expressions of Church
- 13 other significant mission initiatives
- 300+ New Disciples
- 15 more Fresh Expressions in planning.

Headline Figures

- 31 Lightwave Groups
- 12 Fresh Expressions of Church
- 13 other significant mission initiatives
- 300+ New disciples
- 15 more Fresh Expressions in planning
- 20 people joined formational community for Pioneers.



Where are we seeing God at work?

- Public Worship becoming more public (especially outside and online)
- Intergenerational work.



Where are we seeing God at work?

Loving service with...

- Poor and marginalized people
- Community Partnerships and People of Peace.



loverural

Where are we seeing God at work?

- Togetherness and connection
- Healing.



Where are we seeing God at work?

- Vocation and growing leaders
- Initiatives starting small.



What do we sense God is teaching us about approach?

- Trust and boldness
- Listening and humility
- Journeying Together.



Journeying Together

“Way in the Wilderness”... “God has provided the springs” (Isa 40-44)

“overflowing and abundant activity of the Holy Spirit working through Lightwave and through our benefice”

“Respond in love to what is before you... walk alongside.”



lightwave





lightwave

“Keep your sights high and your barriers low”

Simon Mattholie: Rural Ministries

Two examples of practical embedding...



EXAMPLE 1

Helping Lightwave groups (and their leaders) to become more fruitful

- Being on mission in company
- Peer group
- Championing (incumbents and senior staff)
- Mentoring from a practitioner



lightwave

EXAMPLE 2...

**We are learning about what makes attractive
and doable jobs in rural mission-shaped
ministry... for example**



Learning from Bungay



lightwave

- Work with Benefice during vacancy to clarify vision for mission and “count the cost”
- Agreeing clear expectations about the missional incumbent with flexibility
- Project funding makes up parish share for limited period
- Funding directed towards specific work to serve local area and grow new disciples.



Learning from Bungay

- Project funding makes up parish share for limited period
- Funding directed towards specific work to serve local area and grow new disciples
- Currently working with three benefices to enable them to have a fulltime mission incumbent.



lightwave



22.19

2021 Diocesan Board of Finance Financial Statements

Steve West, Treasurer of the DBF

2021 Financial Statements	2021	2020
Statement of financial activities (SoFA)	£k	£k
Total Income	9,988	9,256
Total Expenditure	9,173	9,214
Surplus / (deficit) ⁽¹⁾ ⁽²⁾	815	42
Gains on investments ⁽³⁾	1,689	853
Other (losses)/gains ⁽⁴⁾	(293)	76
Movement in funds	2,211	971

(1) With £196k (2020: £600k) support from a National Church sustainability funding grant

(2) One off £719k surplus on sale of one parcel of glebe land

(3) Rise in value of our investments at the end of the year

(4) £290k impairment on property values held in subsidiary



2021 Financial Statements	2021	2020
Income	£k	£k
Parish Share	6,008	5,994
Grants from Archbishops' Council	1,444	1,500
Charitable activities	536	517
Rent	440	354
Investments	623	591
Other grants/income ⁽¹⁾	937	300
Total Income	9,988	9,256

(1) One off £719k surplus on sale of one parcel of glebe land



2021 Financial Statements	2021	2020
Expenditure	£k	£k
Parochial Ministry: Stipends, pensions, housing maintenance and running costs, Archdeacons etc.	5,436	5,818
Other ministry and mission – resourcing for parishes	1,822	1,569
Contributions to the Archbishops' Council	950	891
Support costs	738	773
Raising Funds	227	163
Total Expenditure	9,173	9,214

2021 Financial Statements	2021	2020
Balance sheet and cash	£k	£k
Unrestricted Funds	4,437	4,056
Restricted Funds	3,550	3,060
Endowment Funds ⁽¹⁾	75,143	73,803
	83,130	80,919
Cash (Outflow)/Inflow ⁽²⁾	(689)	1,553
Loans advanced to Group ⁽³⁾	910	(910)
Net cash funds	221	643

(1) Mainly properties (£57.1m) and Investments (£15.7m) in the endowment funds

(2) Mainly due to higher debtors (for schools' projects), lower creditors due to repayment of National Church loan offset by receipt of glebe land sale

(3) Borrowings (Loan from National Church) repaid



2021 Financial Statements	2021	2020
Balance sheet	£k	£k
Tangible Assets	60,387	60,068
Investments	15,616	14,184
Net current assets	7,127	6,884
	83,130	81,136
Creditors due after one year	-	(217)
Total net assets	83,130	80,919

22.20

Cathedral Update

The Revd Canon Philip Banks

Growing in God



THE CHURCH
OF ENGLAND
**Diocese of St Edmundsbury
and Ipswich**

Minutes of the Previous Meeting

22.21

Draft minutes of the meeting held on 19 March 2022 meeting, paper ref DS(22)P21_M1.

Matters Arising not otherwise on the Agenda 22.22

Minutes of the Bishop's Council

22.23

To receive the minutes of the following Bishop's Council meeting:

- 31 March, ref DS(22)P23.1_BC(22)M2
- 17 May, ref DS(22)P23.2_BC(22)M3

Questions

22.24

Paper ref DS(22)P24.



Notices

22.25

 Growing in God



 THE CHURCH
OF ENGLAND
Diocese of St Edmundsbury
and Ipswich

22.25.1

Suffolk Show

The Revd Sarah du Boulay

Growing in God



THE CHURCH
OF ENGLAND
**Diocese of St Edmundsbury
and Ipswich**

#Suffolk Blessing







22.25.2

Bishops' Lent appeal and other Bishop's update

Bishop Martin

Growing in God



THE CHURCH
OF ENGLAND
**Diocese of St Edmundsbury
and Ipswich**

An incredible £83,735 has been donated to World Vision

This will make a life-changing difference to those who have fled this devastating conflict – by providing children and families searching for a safe haven with hygiene kits, protection and psychosocial support - including child friendly spaces.

22.25.3

Stewardship

Gary Peverley, Finance Director

Growing in God



THE CHURCH
OF ENGLAND
**Diocese of St Edmundsbury
and Ipswich**

Giving Platforms (1) – June 2022

Platform	Diocese (June)	2022 Target	Detail
Parish Giving Scheme	<p>220 parishes joined PGS with 190 parishes with donors</p> <p>1,646 givers totalling £143k in May 2022</p>	<p>248 parishes</p> <p>1,871 givers</p>	<p>91% Gift Aided 58% opted into auto-inflate</p> <p>Average weekly gift £15.43 (ex-GA)</p> <p>Online now most popular way to give</p>
Digital Giving Roll Out (Contactless)	<p>Around 100 churches and almost two thirds of benefices have access to contactless device</p>	<p>Digital roll out continues with St Eds & Ips allocated 40 more free devices in October 2022</p>	
Online and QR codes	<p>106 parishes have online/QR codes</p>		<p>Stripe - new provider to rival Sum Up who will be able to provide Apple/Google pay option (soon to be launched).</p>

Giving Platforms (2) – June 2022

Platform	Diocese (June)	2022 Target	Detail
PCC Workshop programme	Launched in April with grants seminar	Coming up: PGS Legacies Buildings Parish share Trusts Banking Gift aid And more!!	Sessions advertised in e-News & Treasurer Forum Free to book on Eventbrite
Parish Grants and funding	31 parishes in active discussions Intensive support with 4 parishes	180 parishes 25 parishes	

Digital Giving Roll Out

- Pilot - 30 churches set up with contactless and online giving with £26,700 raised since September 2021
- Selected to receive a further 40 devices in October 2022
- Applications - online open on Thursday 30 June 2022 (not before) and close on 20 July 2022

www.parishbuying.org.uk/34-categories/giving-and-payments/277-st-edmundsbury-and-ipswich-digital-giving-rollout)

Contact

Parish Resources Manager
julie.podd@cofesuffolk.org

Julie Podd
07826 556186

Funding and Grants Advisor
beccy.hills@cofesuffolk.org

Beccy Hills
07702 079051



**Next meeting date:
Saturday 1 October 2022, 9.00am**

